

## Sample Questions

### Level 1

1. Plants use \_\_\_\_\_ to collect water from the ground soil.
  - A. leaves
  - B. flowers
  - C. fruits
  - D. roots
  
2. Water appears solid, when it turns into
  - A. water vapor
  - B. ice
  - C. rain
  - D. none of the above
  
3. Soil is formed by
  - A. Rocks breaking apart
  - B. broken trees
  - C. dead animals
  - D. dried grass
  
4. Fossils are
  - A. a type of animal that live on land
  - B. Preserved plants or animals from long time
  - C. a type of plant
  - D. a type of bird
  
5. The moon shines bright because
  - A. it reflects sunlight
  - B. It has lot of light
  - C. it can reflect light from earth

D. of lot of stars present in the sky

**Fill in the blanks by writing your answers**

6. The weather is hot during summer and it is cold during \_\_\_\_\_.
7. In the morning, sun raises in the east and in the \_\_\_\_\_ sunsets in west.
8. A hand lens is useful to look at \_\_\_\_\_ objects, which are difficult for our eyes to see.



9. Roads and homes are artificial structures made by people; forest and mountains are made by \_\_\_\_\_.
10. People who invent and make discoveries are known as \_\_\_\_\_.

**Level 2:**

1. Volcano eruption throws hot melted rocks because
  - A. of pressure inside the earth
  - B. it is cold outside
  - C. mountains are growing
  - D. of lightning strikes on the mountain
2. Forest, Trees and plants are important because ,

- A. They protect our earth by supplying clean air
  - B. They look very nice
  - C. They keep the earth warm
  - D. All of the above
3. By Boiling the water becomes
- A. vapor
  - B. ice
  - C. rain
  - D. none of the above
4. Soil formation from rocks takes place
- A. When the rock falls down suddenly
  - B. Slowly over several years
  - C. When trees grow on rock
  - D. When animals eat rock
5. Plants and animals are made up of
- A. Living cells
  - B. Rocks
  - C. Stones
  - D. Sunlight

Fill in the blanks by writing your answers

6. \_\_\_\_\_ provides light and heat to earth.
7. We can save our planet by \_\_\_\_\_ our waste and trash.
8. \_\_\_\_\_ are shooting stars seen in the night sky.
9. \_\_\_\_\_ animals eat both plants and animals for food.

10. Trees and man takes several \_\_\_\_\_ to grow big.

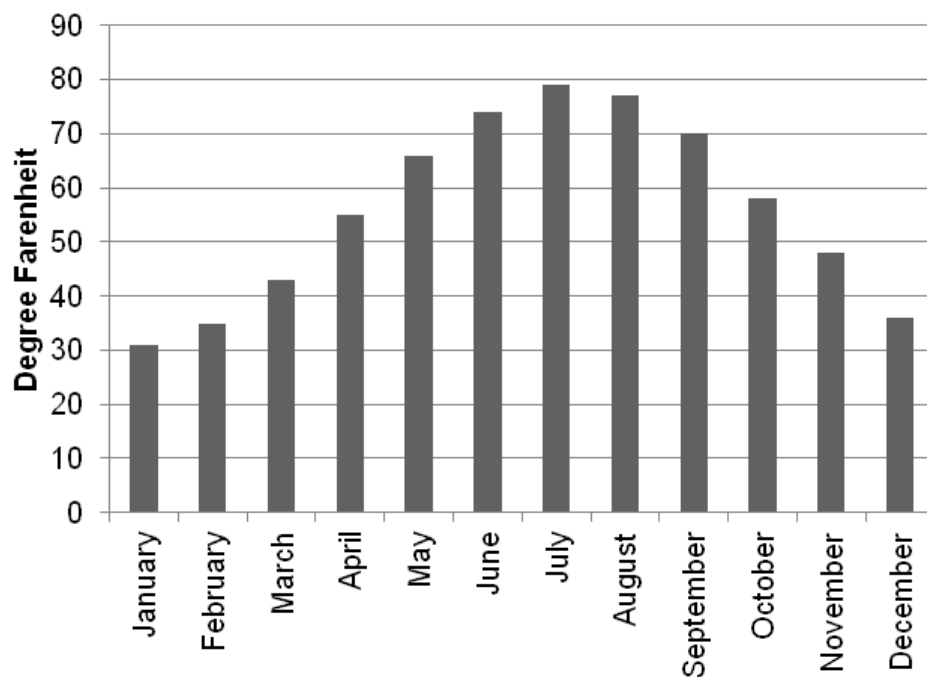
### Level 3

1. Which of the following are minerals?
  - A. Jade, diamond, ruby
  - B. Soil, water, ice
  - C. Grass, dirt, wood
  - D. Salt, sugar, oil
  
2. Air is made up of
  - A. Minerals, like calcium and phosphorus
  - B. Metals, like carbon and steel
  - C. Gases, like oxygen and carbon dioxide
  - D. Nothing
  
3. Burning wood turns it into ashes. Which of the following represent the action that is occurring in this process?
  - A. Change of state
  - B. Chemical reaction
  - C. Physical reaction
  - D. Corrosion
  
4. Milk is the source of
  - A. Vitamins and Minerals
  - B. Protein
  - C. Fat
  - D. All of the above
  
5. Magnetic needle of a compass always point to

- A. North South direction
- B. East West direction
- C. North East direction
- D. South West direction

**Fill in the blanks by writing your answers**

6. A temperature of 63°F in Boston reported in the January of 1943, comparing this with the average temperature recorded in Massachusetts (shown in the graph, see below), what would you conclude about this temperature in terms of being average, higher or below than average. Write your conclusion in the blank space

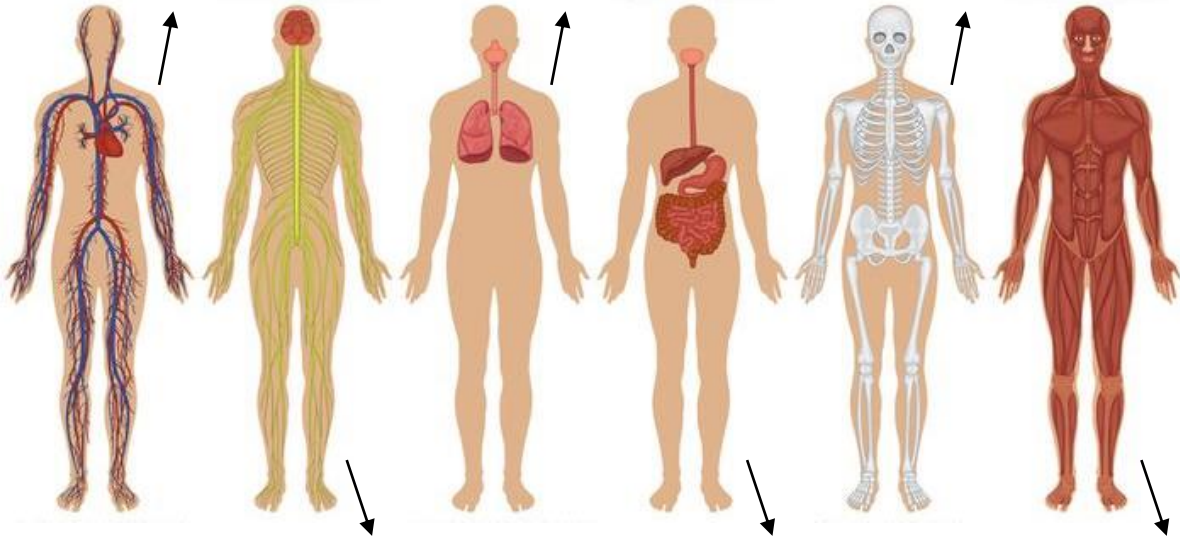


- 7-11 In the following image the major human body systems are shown, label the images to show which of these represent digestive system, skeletal system, circulatory system, nervous system, respiratory system and muscular system

7.

8.

9.



9.

10.

11.

#### Level 4

1. Fossils provide scientific evidence to prove
  - A. that frogs live in forest
  - B. that animals can play music
  - C. that plants and animals existed in prehistoric times
  - D. All of the above
  
2. Which organ of our body help us breathe

- A. Liver
- B. Kidney
- C. Intestine
- D. Lung

3. A bouncing ball is an example of an object

- A. in continuous motion
- B. showing equal and opposite reaction
- C. showing unequal reaction
- D. with unusual reaction and motion

4. Which organ in our body works like a camera

- A. Ear
- B. Nose
- C. Mouth
- D. Eyes

5. Diseases spread from person to person, but injury \_\_\_\_\_.

- A. cannot spread from person to person
- B. can spread within a family
- C. can spread to few person
- D. can only spread to sick people

6. Fruits from the trees always fall down because of the action of

\_\_\_\_\_

7. Write the stages of frog life cycle in the correct order

---

---

8. Construction of buildings and homes could destroy forests in future. Which forest resource is vulnerable to destruction because of construction?

\_\_\_\_\_

9. Write the stages of frog life cycle in the correct order

---

10. Construction of buildings and homes could destroy forests in future. Which forest resource is vulnerable to destruction because of construction?

\_\_\_\_\_

#### Level 5

1. The amount of water vapor held in the air is

- A. rain
- B. humidity
- C. air pressure
- D. clouds

2. A tool that makes work easier with few or no moving parts is called a/an

- A. accelerator
- B. simple machine
- C. complex machine
- D. robot

3. What is the system responsible for taking in oxygen and removing carbon dioxide from the body?



- A. Circulatory
- B. Respiratory
- C. Excretory
- D. Digestive

4. Which body system tells you when to reach for and catch a falling book?

- E. muscular
- F. skeletal
- G. nervous
- H. respiratory

5. Ball bouncing back is an example of

- E. Object in continuous motion
- F. Object showing equal and opposite reaction
- G. Object showing unequal reaction
- H. Object with unusual reaction and motion

6. Label at least two parts (of a simple machine) that belong to the following simple machine. (



\_\_\_\_\_ , \_\_\_\_\_

7. Label at least two parts (of a simple machine) that belong to the following simple machine.



\_\_\_\_\_ , \_\_\_\_\_

Download from  
Dreamstime.com

8. Kyle threw a football and a balloon that were of same size up in the air,

A. Which object do you expect to fall down first?

B. Explain what caused that object to fall down first, name two factors related to object and force, responsible for this action.

### Level 6

1. The area of the United States that has the highest risk of tornadoes is \_\_\_\_\_.

- a. Tornado Alley
- b. Funnel Town
- c. Disaster Pathway
- d. Alaska

2. According to the Geologic Time Scale what is the current period called?

- a. Cretaceous

b. Jurassic

c. Triassic

d. Quaternary

3. Food particles pass through the walls of what?

a. The large intestines

b. The small intestines

c. Stomach

d. Gallbladder

4. When a substance changes from a liquid to a gaseous state, this is said to be the\_\_\_\_\_.

a. boiling point

b. starting point

c. melting point

d. ending point

5. Hardness, temperature, color, size, and smoothness are all

a. states of matter

b. physical properties of matter

c. chemical properties of matter

d. used to describe elements but not compounds

6. The gravitational force of the moon on Earth's oceans is stronger than the gravitational force of the sun because

7. The acceleration of gravity is
  
8. Elizabeth walks 15 m up an inclined plane. The highest point of the inclined plane is 5 meters above the ground. What does Elizabeth calculate as the ideal mechanical advantage of the plane?
  
9. When you travel to space the sun is always there but the surroundings appear dark. However, on earth the surroundings always look bright during the day. What phenomenon is responsible for the day to look brighter on earth?
  
10. All colored objects look black if observed in a dark room or during the night. The sunlight primarily consists of white light, but when the object is placed under sunlight these show different colors, explain how white light is converted into color by the object.